

**SNIMAY**

WHOLE HOUSE  
CUSTOMIZATION

KITCHEN | WARDROBE | LIVING | DOOR

**SNIMAY**

GUANGZHOU SNIMAY HOME CO., LTD  
Add: NO.88, Fulian Road, Shilou Town, Panyu District, Guangzhou, China  
www.snimayhome.com

+86-020-3775-0444 | +86-158-7004-8641 | +86-135-0150-4611

sales@snimay.com

Snimay Home





## ■ ABOUT SNIMAY

Established in 2003, Snimay Home Co. Ltd is located in Guangzhou, China. As one of the leading brand of whole house custom-made furniture manufacturer in China, Snimay has 2 factories in Guangzhou and 1 factory in Hubei with a total area of more than 1,000,000 square meters, and 1200 dealers in China, providing kitchen, wardrobe, door & window, and whole home furniture.

With full HOMAG production line and eco-friendly material, our mission is to bring better, healthy and green life to customers all over the world. Now Snimay has achieved initial success in more than 50 countries including Australia, Canada, the US, UAE, Vietnam and so on.

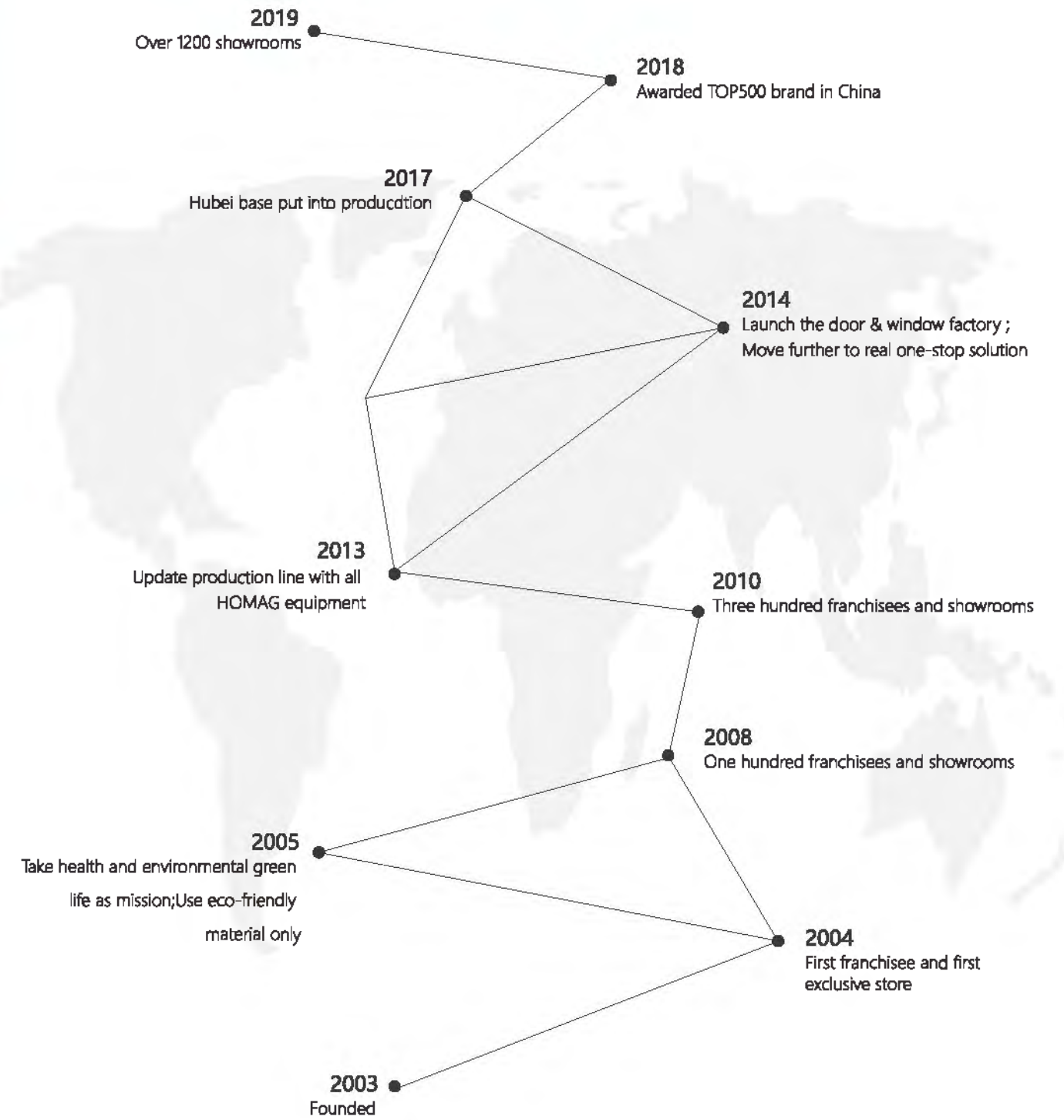


▲ Guangzhou Factory, South China



▲ Jingmen Factory, Central China

## ■ DEVELOPMENT HISTORY





▲ Left Bank Stars

"LEFT BANK STARS" of SNIMAY series absorbed the emotional manner and artistic scent of the left bank of Paris for product development. Its vigorous color matched with straightforward lines. The simple but perfect pattern seemed to purify the complexity of life. with small details it constructed for you the artistic life on the left bank of Paris.

The bright color and tidy space bring a good mood. Its design emits a fresh feeling of nature, achieving relaxation and Joy. Help people perceive its warmth and let their mind open. Its abundant meaning and exquisite line reflect your ambition, and interpret the excellent taste of modern household.





▲ Conciseness

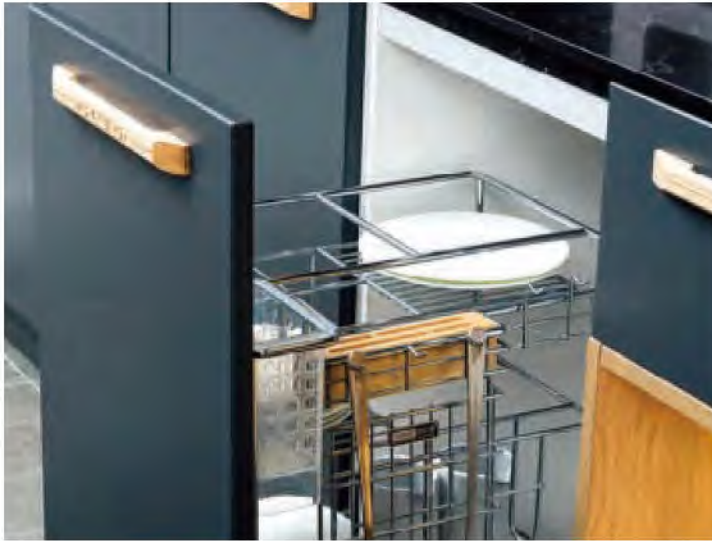


## SOPHISTICATED AESTHETIC, SURPASSING FASHION

Life is simple, desire is still simple, simple to build up, light to carry forward, life journey will not sink because of the heavy burden.

## TIME IS PASSING, LOVE IS LEFT

Time will go but love will be remained. We outlined steady and magnificent space with concise lines. To avoid complexity and pursue nature, life will be more free and comfortable.





▲ Within time

## POETIC LIVE

Gentle wind of the spring can make your forget yourself. You exist as the space itself, enjoying life in unhurried paces .





▲ Andydream Sally



## GIVE YOU A NOBLE AND ELEGANT KITCHEN

The overall industrial structure matched with industrial color and lines. ANDY DREAM SALLY turns your imaginary land into the elegant stage of life. The mounted kitchen cabinet, stove and large center island combined together, making your kitchen and bathroom space elegant. Combined with rich storage function, it provides you with an elegant life.



▲ LUXURY RAFFAEL-SERIES

Warm wood grain color, leather color and cool dark, solid color collision, highlighting the quality of high-grade gray; Add metallic color, instantly lit up the vitality of the space.





▲ LUXURY BONNARD-SERIES

PETG material is adopted to create a mirror luxury feeling similar to UV material. The overall space is artistic and high-end, and the surface is smooth and smooth, not easy to change color and oil stain, and more durable.



### LIVING ROOM

Large color block matching design, with a small area of metal decoration, delicate and upgrade, silver lime and phantom black door board advanced and durable, very dark 30 mm thick board, to bring a stable texture to the TV cabinet.

### KITCHEN ROOM

The hanging cabinet and the ground cabinet are illusory black, enhancing the sense of space science and technology and grade; the white quartz mesa and the atmospheric texture add luster to the cabinet. Handless design, clean and tidy cabinet, exquisite and simple life from the kitchen.



## BED ROOM

The whole line is firm and modern, just like a clean building, surrounded by light, with profound connotation. Glass doors are matched with silver lime, soft and rigid, showing elegant and comfortable new male performance, allowing light to wander through amber door panels, alternating light and shade full of fun.

### © Human body sensor lamp

Human body induction lamp, intelligent induction, convenient to find clothes.





## IMPROVING GRADE AND ENRICHMENT

- Golden brushed k-frame glass door

Golden wire glass door, improve the grade and richness; Transparent visual effect, clear at a glance.

Fashion series



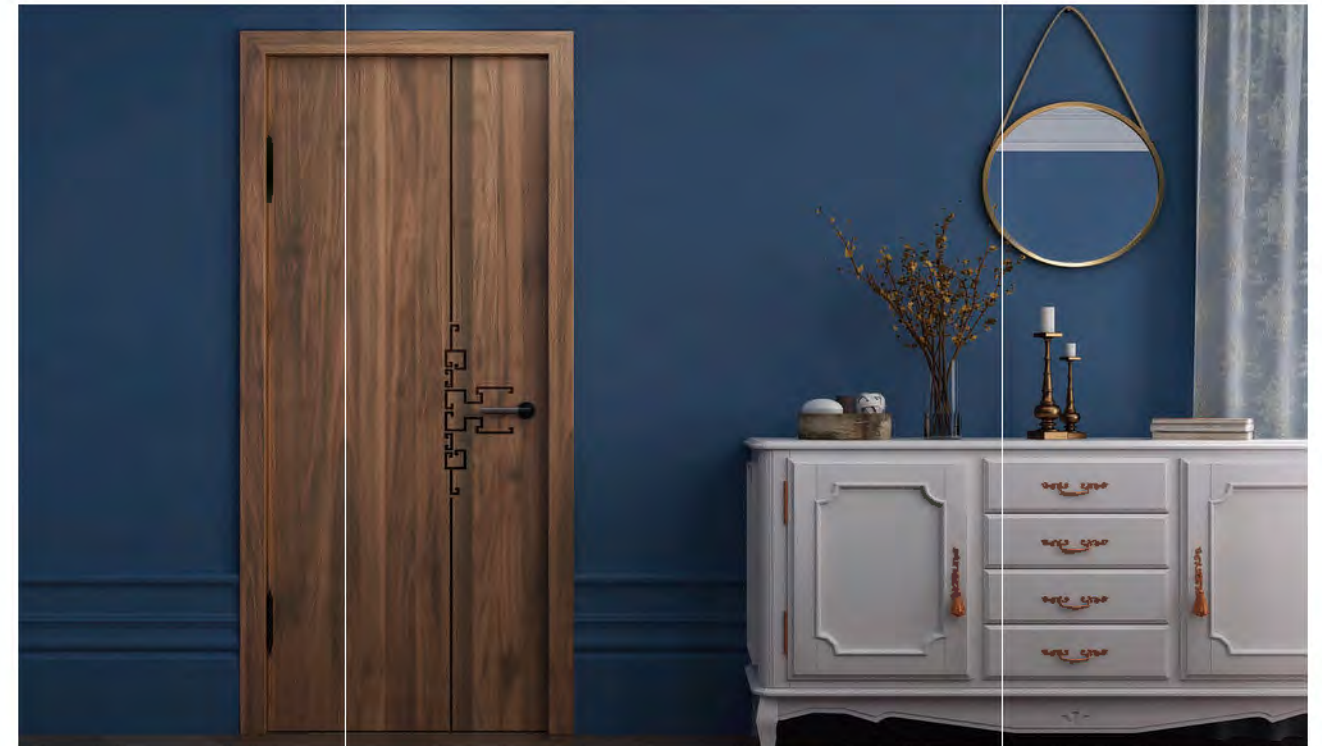
▲ Message



▲ Tuffy



▲ Twilson



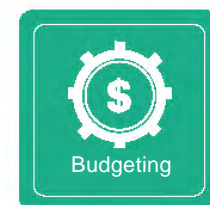
▲ Mo caso

## PROJECT SUPPORTS

We attribute our project achievements to our strengths in products and services:

- ◆ Jobsite measurement
- ◆ Budget control proposal
- ◆ Quality control
- ◆ Safe shipment
- ◆ Jobsite installation
- ◆ 10 years warranty

When you work with us, you will be highly impressed by our passionate and highly responsible project teams. With years of expertise, they are capable of handling any complexity or uncertainty that may arise.



## Residential Project-Tinian,Saipan, America

20 apartments. Products supplied: kitchen cabinet, wardrobe, bath cabinet, TV cabinet, bookcase, night table , bed, sofa, chair, table, curtain, light, appliance.



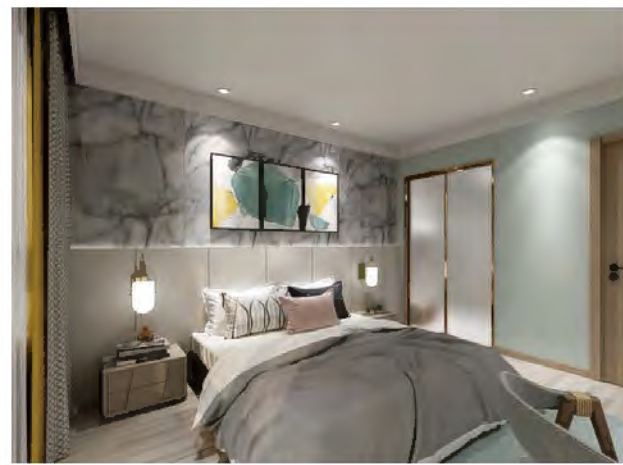
## Hotel Project- Melbourne, Australia

36 rooms. Products supplied: kitchen cabinet, wardrobe, bath cabinet, night table.



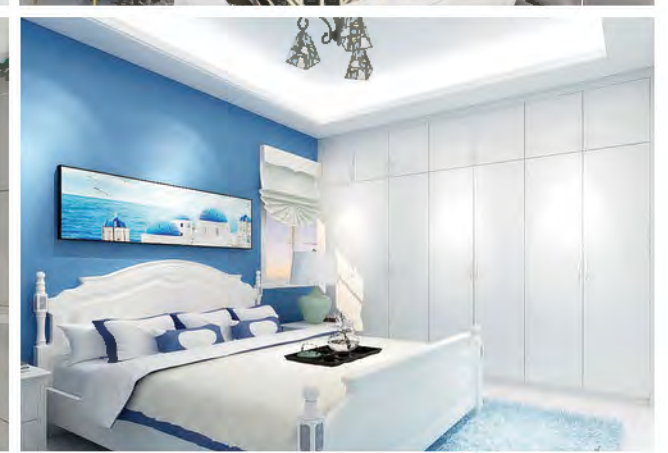
## Hotel Project-Vancouver, Canada

200 rooms. Products supplied: kitchen cabinet, wardrobe, bath cabinet, night table, bed, desk,,door.



## Residential Project-Pattaya, Thailand

200 apartments. Products supplied: kitchen cabinet, wardrobe, bath cabinet, night table, bed, sofa, chair, table, curtain, light.





## SNIMAY SERVICE

### R&D, Design

- ◆R&D team more than 100 people.Including Smart Home
- ◆Patent quantity over 170 unit.

### Package

- ◆Snimay package has expert techniques and tools to protect your items for shipping. It is strong enough through layers of packing, you can enjoy buying without worrying about subsequent assembly problems.

### Measurement

- ◆If necessary, we will send an experienced, professional measurement service team to visit you in your home to assess the conditions and provide accurate measurements. Additional fees will be charged accordingly.
- ◆Also, you can solve the installation problem by yourself. We provide professional MEASUREMENT GUIDANCE.

### Installation

- ◆First of all, you can select goods be packed as assembled or KD.
- ◆If KD, followed three options for you to do installation  
A. Local Installation Service B. Snimay Installation service C. DIY Guide ( Snimay supply installation vedio)

### Warranty

- ◆We will try our best to ensure all products be well finished, packed, shipped. If you have the warranty claim, the defective parts will at our option either be repaired or replaced and we reserve the right to replace defective parts with parts of equal or greater value.

### Delivery & Shipment

- ◆If you have experience in international importing and exporting, you can solve the delivery & shipment problem by yourself. If not, we are happy to assist you.

## ◆HIGH QUALITY SERVICE DURING ALL PROCESS



Snimay has an elite team with perfect configuration, strong execution and good service, as well as a service support team that follows the whole process of pre-sales and after-sales service. It has standardized and perfect service process and "N to 1" full-process service to ensure delivery date and service quality.

- ◆R&D TEAM MORE THAN 100 PEOPLE.INCLUDING SMART HOME
- ◆PATENT QUANTITY OVER 170 UNIT.



- ◆PROFESSIONAL INSTALLATION AND MEASUREMENT TEAM



◆MORE THAN 95% OF THE INTERNATIONAL SUPPLIERS OF SNIMAY ARE WORLD FAMOUS COMPANIES.



◆GERMANY HOMEG PRODUCTION LINE

Production,quality control ,processing system are optimized by German engineer



Germany HOMAG electronic automatic four-side edge banding machine



Striping from Germany HOMAG

CNC multi-function computer processing center